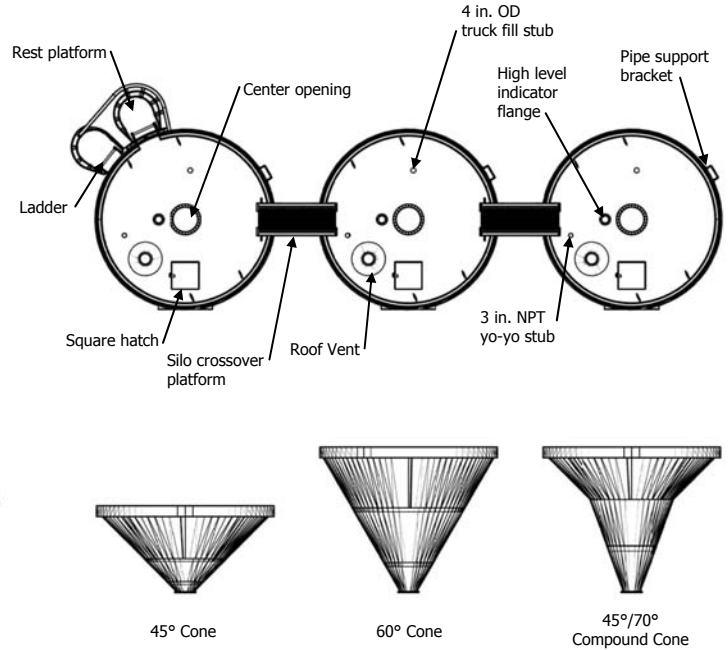
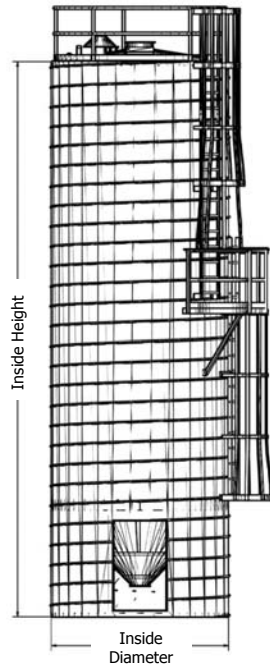


SPIRAL ALUMINUM SILOS



SILO MODELS		11 ft. 6 in. diameter									
Silo inside height ft. (m) ^A	24 (7.3)	28 (8.5)	30 (9.1)	32 (9.8)	36 (11.0)	40 (12.2)	44 (13.4)	48 (14.6)	52 (15.8)	56 (17.1)	60 (18.3)
Performance characteristics											
Silo Capacity 45° cone ft ³ (liters) ^{B,C}	1818 (51480)	2234 (63260)	2441 (69121)	2649 (75011)	3065 (86791)	3480 (98543)	3896 (110322)	4311 (122074)	4727 (133854)	5142 (145605)	5558 (157385)
Construction material	5052-H-32 Aluminum										
Wind Load ^D	100 mph										
Snow load	40 lb/ft ³										
Weight lb (kg)^E											
Shipping (empty)	4066 (1844)	4459 (2023)	4768 (2163)	5076 (2302)	5664 (2569)	6117 (2775)	6569 (2980)	7020 (3184)	7846 (3559)	8341 (3783)	8838 (4009)
Full to capacity	76786 (34830)	93819 (42556)	102408 (46452)	111036 (50366)	128264 (58180)	145316 (65915)	162409 (73668)	179460 (81403)	196926 (89325)	214021 (97079)	231158 (104853)

SILO MODELS		14 ft. 8 in. diameter									
Silo inside height ft. (m) ^A	24 (7.3)	28 (8.5)	30 (9.1)	32 (9.8)	36 (11.0)	40 (12.2)	44 (13.4)	48 (14.6)	52 (15.8)	56 (17.1)	60 (18.3)
Performance characteristics											
Silo Capacity 45° cone ft ³ (liters) ^{B,C}	2835 (80278)	3511 (99420)	3849 (108992)	4187 (118563)	4863 (137705)	5538 (156819)	6214 (175961)	6890 (195103)	7566 (214245)	8242 (233387)	8917 (252501)
Construction material	5052-H-32 Aluminum										
Wind Load ^D	100 mph										
Snow load	40 lb/ft ³										
Weight lb (kg)^E											
Shipping (empty)	5443 (2469)	5957 (2702)	6397 (2902)	6836 (3101)	7355 (3336)	7876 (3573)	8395 (3808)	9341 (4237)	9933 (4506)	10532 (4777)	11116 (5042)
Full to capacity	118843 (53907)	146397 (66405)	160357 (72737)	174316 (79069)	201875 (91570)	229396 (104053)	256955 (116554)	284941 (129248)	312573 (141782)	340212 (154319)	367796 (166831)

SPECIFICATION NOTES:

- ^A For overall height add 43 inches to inside height to account for the guardrail
- ^B Cones are available in 45° for pellets, except PET; 60° for powdered materials; and compound 45°/70° for PET pellets
- ^C Reduce silo capacity for 60° cone. 11 ft. 6 in., subtract 245 ft³; and 14 ft. 8 in., subtract 558 ft³.
- Reduce silo capacity for 45°/70° compound cone. 11 ft. 6 in., subtract 360 ft³; and 14 ft. 8 in., subtract 636 ft³.
- ^D Wind load is 100 mph for Seismic Zones I and 140 for Seismic Zone II and III
- ^E Weight is based on 40 lb/ft³ materials.